



From the First Tooth

2021 Review!

Health Systems Check-in
December 14, 2021



Agenda

Partner Updates

- Oral Health Updates
- FTFT Updates
- Success / Challenges

2021 End of Year Review

Database Definitions



Partner Updates

- Oral Health Updates
- FTFT Updates
- Successes / Challenges



2021 Highlights

Program Implementation



- Achieved 2021 Program Goal (Contacted 100% of practices with the status “not trained”)
- Updated FTFT database to improve data collection
- Interacted with 183 primary care practices (via phone, in-person, or email)
- Distributed over 100 FTFT Toolkits to 55 practices
- Contacted 86 dental offices serving pediatric patients across the State to determine MaineCare and new patient appointment status and used information to create a dental referral list which was distributed with the FTFT Toolkit
- Hosted 9 FTFT Health Systems meetings; Central Maine Health Care and Medical Care Development recruited as new partners
- Building partnership with MaineCare so FTFT can serve as a technical assistance partner for primary care practices needing to meet the oral health service requirements for PCPlus – *In Progress*
- Hiring .4 FTE FTFT Program Coordinator and increasing NLH capacity – *In Progress*



2021 Highlights

Education

- Trained 111 primary care staff via an online asynchronous training module or live via Zoom
- Presented or exhibited on different aspects of the FTFT program during the following events:
 - ME AAP: Oral Health during the Pandemic
 - MEPCA: Office Hours
 - MPHA: Annual Conference
 - MDHA: Fall Conference
 - MaineGenral: Grand Rounds – *Scheduled for January 2022*
 - Oral Health Learning Café: a national group of medical-dental integration stakeholders – *Scheduled for January 2022*

Marketing and Outreach

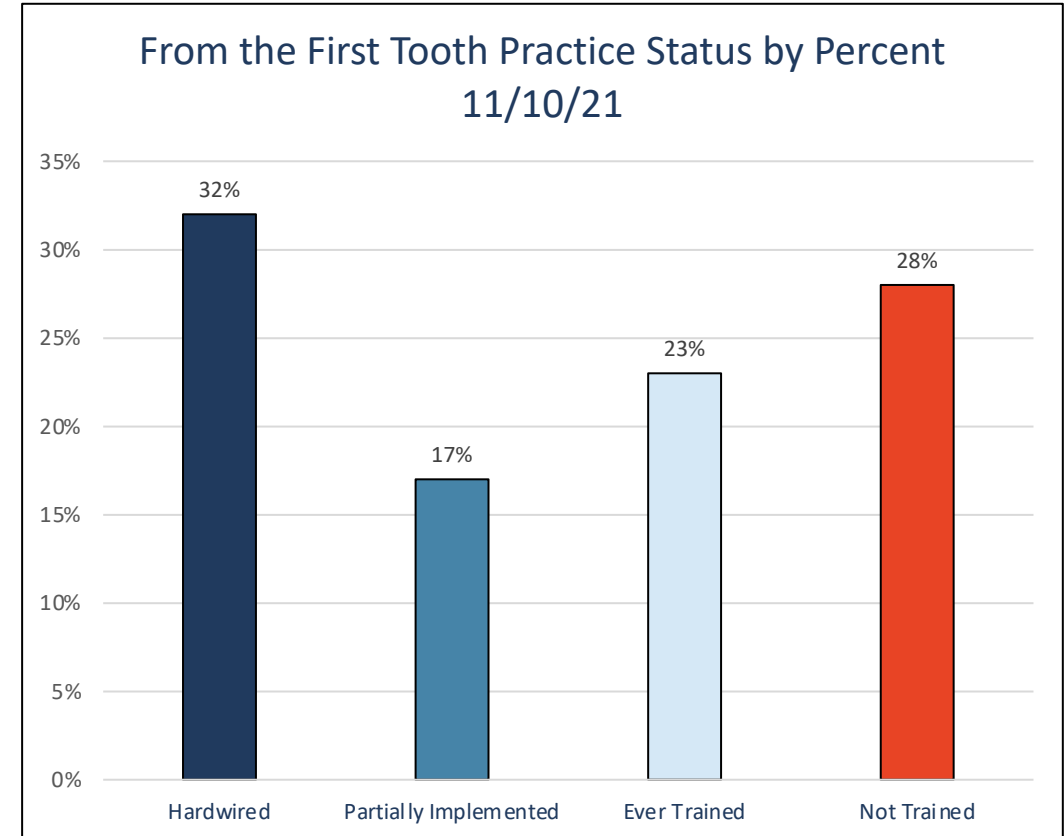
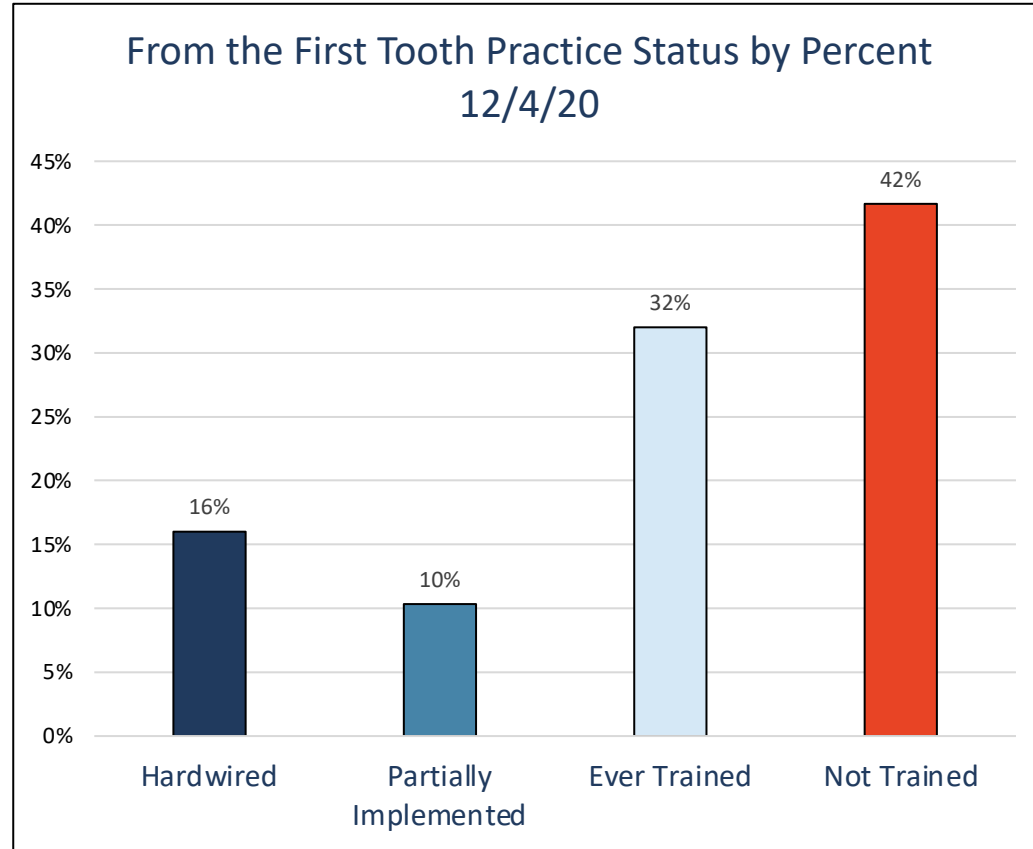
- Partnered with the Maine Dental Hygienists' Association to identify 9 independent practice dental hygienists interested in direct referrals from primary care practices through the online community resources platform, Aunt Bertha
- Secured a contract to update the FTFT website (streamlining information to increase traffic to online materials ordering and virtual training); *To be completed by February 2022*

Policy

- Provided written testimony for LD 1501
- Commented on the U.S. Preventive Services Task Force's recommendation statement to expand oral health risk assessment and fluoride varnish services to children ages 7 and above



Internal Measures: 2021 FTFT Database



FTFT Practice Status Definitions

- **Not Trained:** No interaction with FTFT
- **Ever Trained:** Received either in-person or virtual training
- **Partially Implemented:** Implementing either oral health risk assessment/evaluation or fluoride varnish
- **Hardwired:** Implementing oral health risk assessment/evaluation, fluoride varnish, parent/caregiver education, and dentist referrals



Internal Measures: 2021 Changes in Practice Status

Practice	Status
Hope Health Family Practice	Closed
Maranacook Family Health Care	Closed
Royal River Family Care	Closed
Coastal Family Medicine of Maine	Closed
Coastal Health Center	Closed
Jean Antonucci, MD	Closed

Practice	Status
Osteopathic Center for Family Medicine	Non Participating
Gaddis, John DO	Non Participating
Acadia Family Health Center	Non Participating
Whiting Bay Family Medicine	Non Participating
Portland West Family Practice	Non Participating
NMMC Medical Practice – Family Practice	Non Participating
John Gaddis DO	Non Participating
Rosalind R Waldron ME	Non Participating

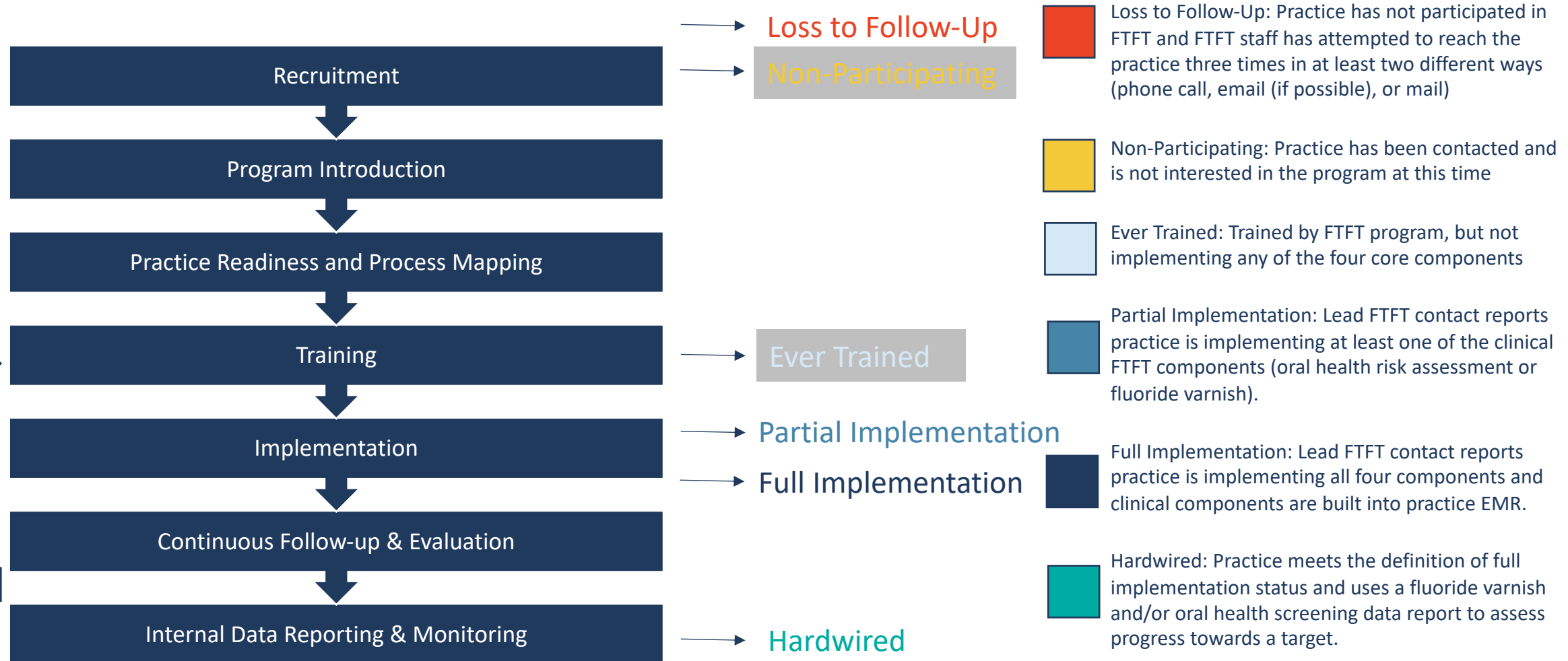
Practice	Status
Live Life Family Practice	New Practice - Ever Trained
Personalized Pediatrics of Maine	New Practice - Hardwired
Fiddle Head Pediatrics	New Practice – Partially implementing

Practice	Status
Elmwood Primary Care	Not Trained - Hardwired
CCS Family Health Care	Not Trained - Partially Implemented
Be Well My Friend- Augusta	Not Trained- Ever Trained
Martin's Point Health Care- Brunswick	Not Trained- Ever Trained
Northern Light Primary Care –Waterville	Not Trained- Ever Trained
InterMed Pediatrics- Foden Road	Not Trained -Hardwired
Full Circle Direct Primary Care	Not Trained -Partially Implemented
Portland Direct Primary Care	Not Trained -Partially Implemented
Auburn Medical Associates	Not Trained -Implemented
Health Access Network- West Enfield	Not Trained-Ever Trained
Pediatric Associates of Lewiston	Not Trained - Hardwired

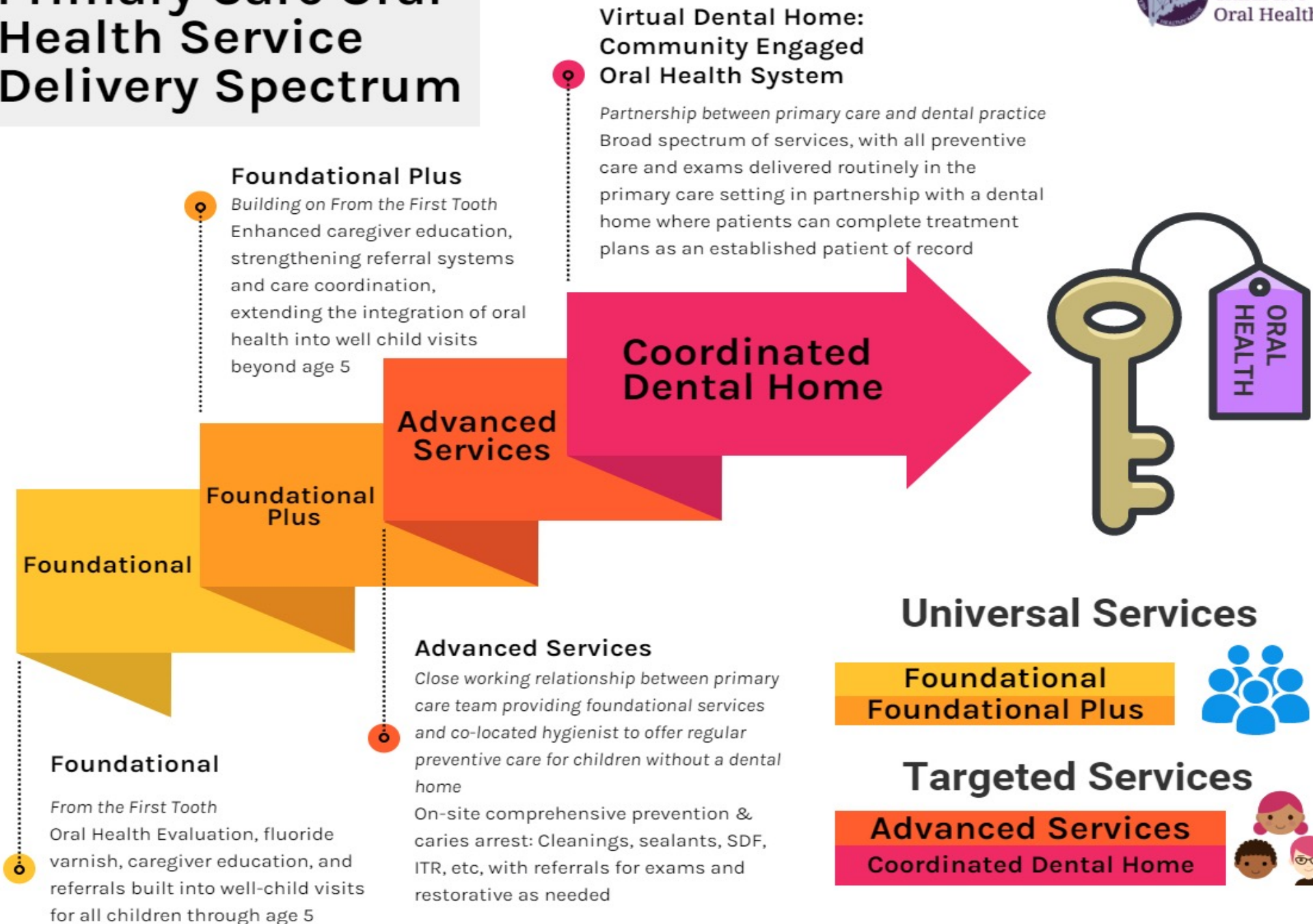
Practice	Status
Northern Light Primary Care- Monson	Ever Trained -Hardwired
PCHC Penobscot Pediatrics	Ever Trained -Hardwired
Pines Caribou Health Center	Ever Trained -Hardwired
Pines Presque Isle Family Health Center	Ever Trained -Hardwired
Harry E. Davis Pediatric Center	Ever Trained -Partially Implemented
Fish River Rural Health- Madawaska	Ever Trained-Hardwired

Practice	Status
Health Access Network- Lincoln	Partially Implementing -Hardwired
Health Access Network- Medway	Partially Implementing -Hardwired
Health Access Network- West Enfield	Partially Implementing -Hardwired
KVHC Patten	Partially Implementing -Hardwired
KVHC Ashland	Partially Implementing -Hardwired
KVHC Brownville	Partially Implementing -Hardwired
KVHC Millinocket	Partially Implementing -Hardwired
Milbridge Medical Center	Partially Implementing -Hardwired
Pines Women's and Children's Health Center	Partially Implementing -Hardwired

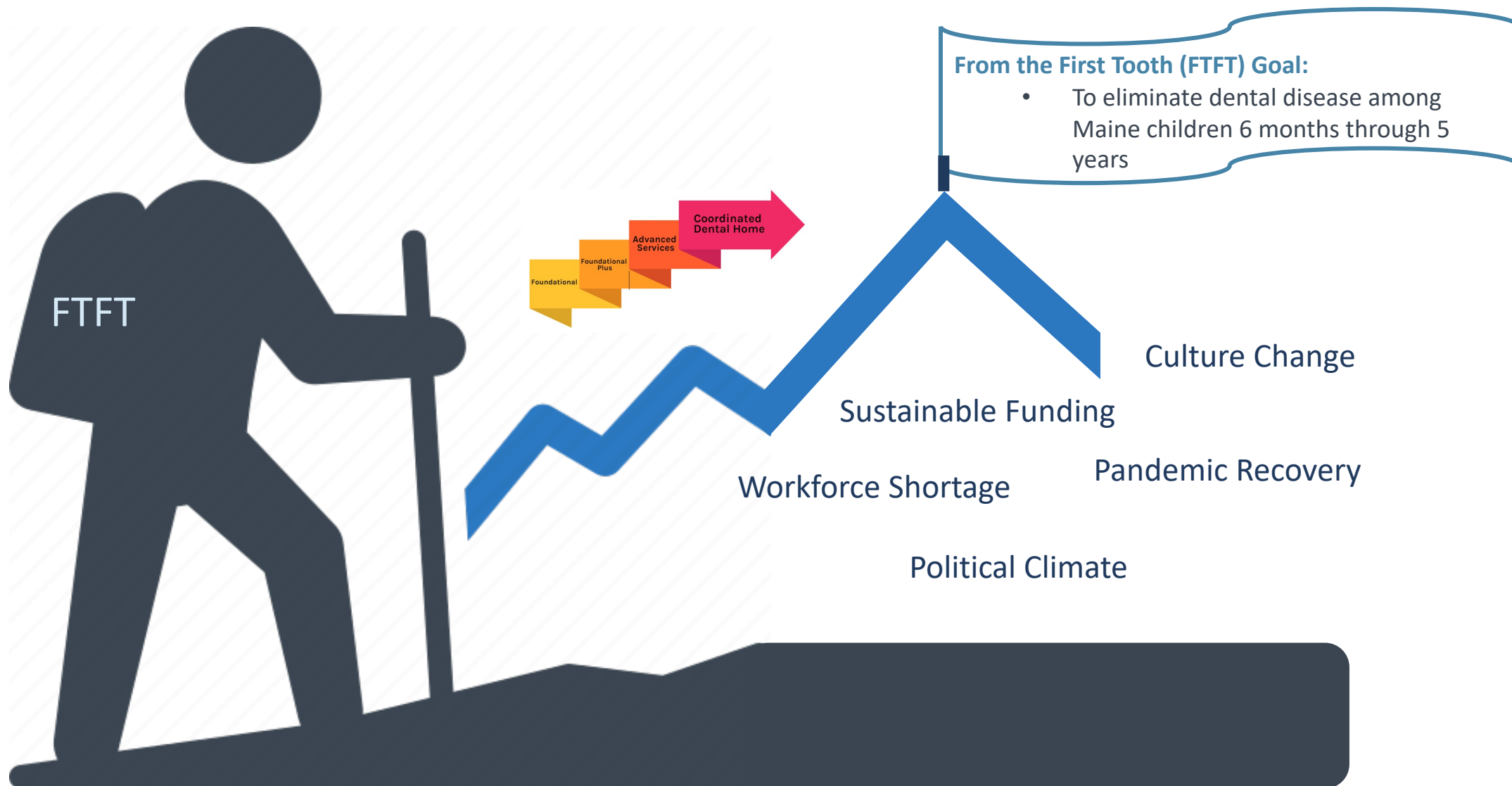
2022 Changes to Implementation & Tracking



Primary Care Oral Health Service Delivery Spectrum



Where We Are Headed



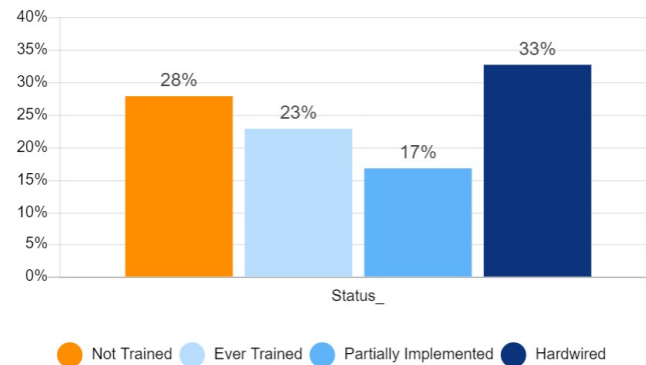


FTFT Dashboard Snapshot



From the First Tooth Dashboard

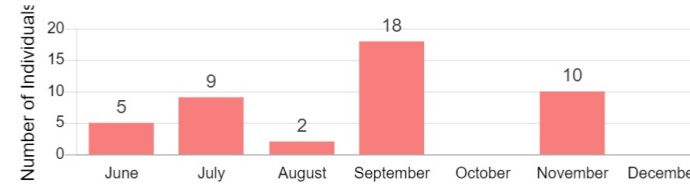
Practice Status by Percent



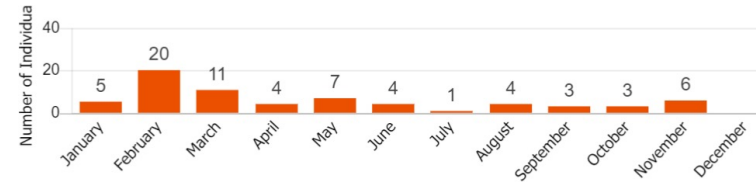
Total Count of Practices by Status



Number of Individuals Trained in Person



Virtual Training Views by Month



Number of Practices Requesting Materials by Month

