

CHC AMBASSADOR NEWSLETTER

HEALTH EQUITY IN ACTION

Addressing health equity is at the foundation of the Community Health Center movement. CHCs' ability to address a wide range of primary care issues, from dental to behavioral health, while also understanding and responding to Social Drivers of Health (SDOH), makes them a crucial part of the nation's healthcare infrastructure and a leader in efforts to address inequities in health care delivery.

Inequities in SDOH have wide-ranging effects on health and survival. CHCs utilize a "whole person" approach to providing services and unique care-team provider models. They improve the health and well-being of underserved communities while empowering people to become actively involved in solving issues unique to their needs and communities.

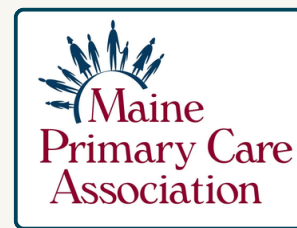
CHCs are the largest, independent primary care network in the state, serving over 200,000 patients (1 in 6 Maine people). CHCs throughout Maine provide innovative services that directly respond to the need of their patient populations. Programs at each CHC may vary, but the intent is the same: to build stronger, healthier communities throughout the state.

This can include insurance enrollment support, nutrition assistance, emergency shelter, heating assistance, case management, transportation, interpretation services, emergency funds, care coordinations, educational resources, permanent and transitional housing, and employment programs.



TAKE ACTION TODAY

Learn more about the [Moving Maine Network](#). The Moving Maine Network is a multi-sector, statewide collaborative. Members work in transportation, planning, aging, disability, health care, human services, environment, public health, faith communities, philanthropy, housing, as well as individuals who have with lived experience with transportation barriers. MPCA is proud to be a member of the network. If you are passionate about the intersections of health care and transportation, we encourage you to learn more about Moving Maine and their policy work [here](#).



IMPORTANT DEFINITIONS

- **Health Equity:** Everyone has a fair and just opportunity to be healthier. This requires addressing obstacles to health such as poverty, discrimination, powerlessness, lack of access to good jobs with fair pay, substandard education and housing, and unsafe environments.
- **Social Drivers of Health:** The conditions in the environments where people are born, live, learn, work, play, worship, and age that affect a wide range of health, functioning, and quality-of-life outcomes and risks. These conditions are shaped by the distribution of money, power, and resources.

SOCIAL DRIVERS OF HEALTH



CHCs IN THE NEWS

Harrington Family Health Center

Demee Manchester has been named CEO. She served as the Interim CEO for the past 6 months, in addition to performing her duties as COO.

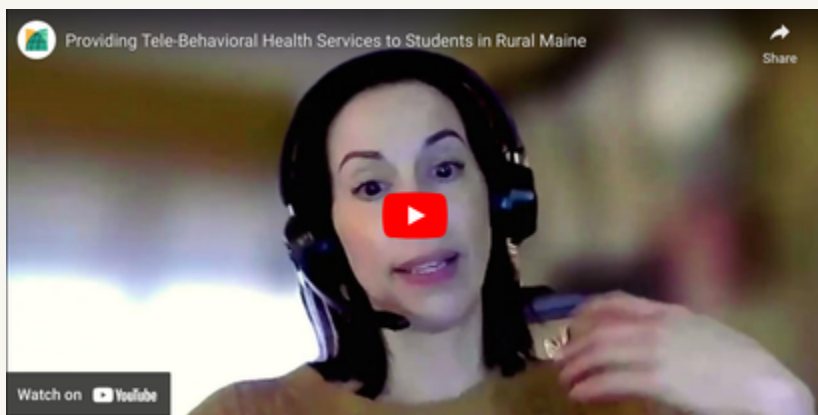
Penobscot Community Health Care

Seaport Community Health Center has officially opened in Belfast, providing primary care, dental and pharmacy services.

St. Croix Regional Family Health Center

MCD Global Health has released a video featuring SCRFHC and the Youth Tele-Behavioral Health Program, part of the Maine Community Connections Initiative, which provides students with support from a clinician via telehealth and a community health worker (CHW) in school.

ST. CROIX REGIONAL FAMILY HEALTH CENTER: PROVIDING TELE-BEHAVIORAL HEALTH SERVICES TO STUDENTS IN RURAL MAINE



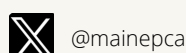
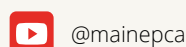
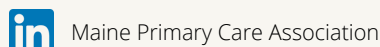
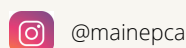
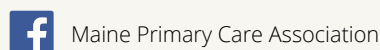
SHARE YOUR WHY

Use your voice and experiences to share, inspire, and motivate Members of Congress and your peers to protect Community Health Centers. Visit the Health Center Advocacy Network and record a video today.

[SHARE YOUR STORY HERE](#)

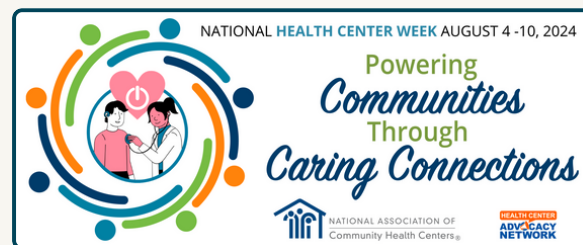
MPCA SOCIAL MEDIA

Follow us online to stay up to date on the latest news across the CHC network.



SAVE THE DATE NATIONAL HEALTH CENTER WEEK: AUGUST 4 - 10

Every August, CHCs across Maine and the country come together to celebrate with patients, staff, and community members. The theme for this year is Powering Communities Through Caring Connections. We look forward to celebrating with you!



READING CORNER

Dr. Chris Pezzullo, MPCA's Chief Clinical Officer, recommends [Healthy People 2030](#) and the resources they have compiled on SDOH. Healthy People, a project of the US Department of Health and Human Services, provides 10-year, measurable public health objectives — and tools to help track progress toward achieving them.

MPCA'S COMMUNITY HEALTH CENTER NETWORK

